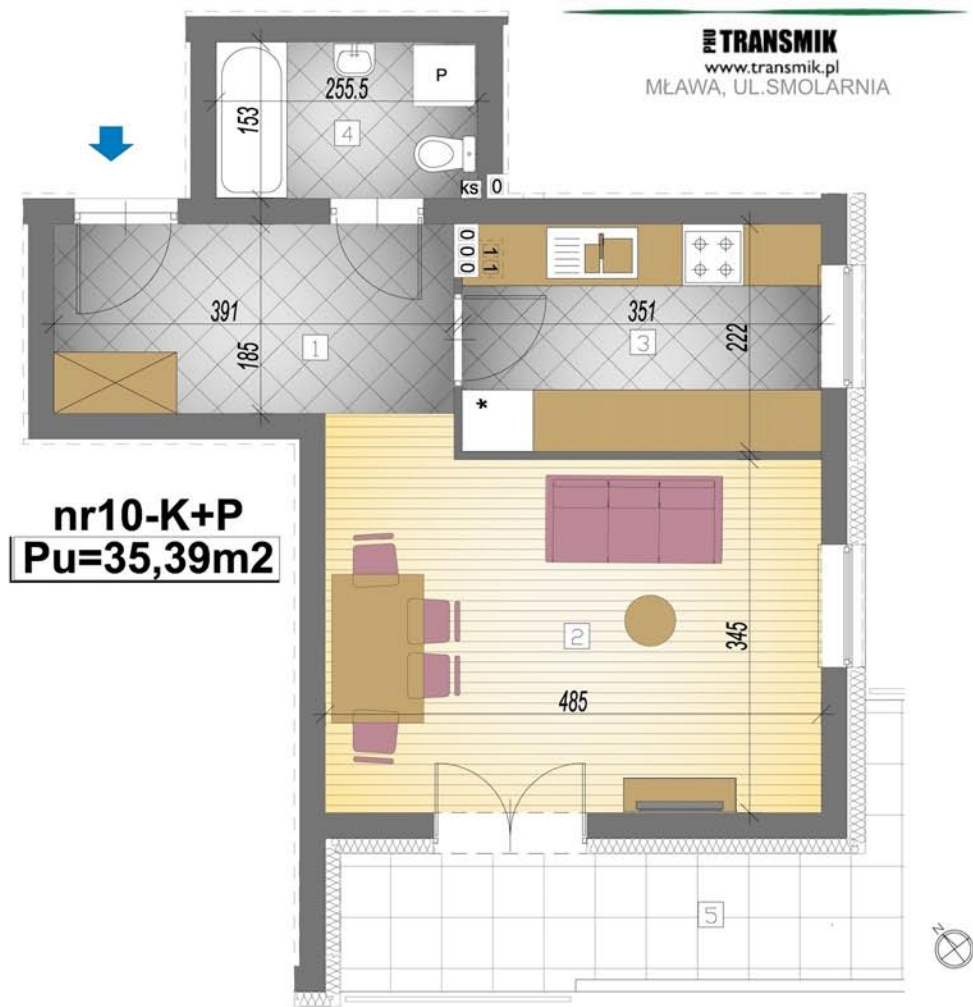


„ZIELONE OGRODY”

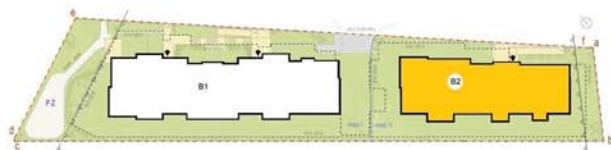
PNE TRANSMIK

www.transmik.pl

MŁAWA, UL. SMOLARNIA



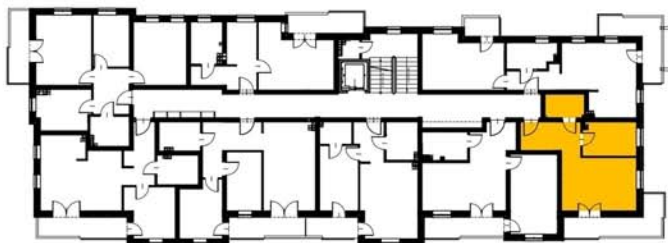
nr10-K+P
Pu=35,39m²



POWIERZCHNIA UŻYTKOWA

35,39m²

- | | |
|------------------|-----------------------|
| 1. HOL | - 7,06m ² |
| 2. POKÓJ DZIENNY | - 17,05m ² |
| 3. KUCHNIA | - 7,53m ² |
| 4. ŁAZIENKA | - 3,75m ² |
| 5. BALKON | - 10,05m ² |



BUDYNEK 2 - I PIĘTRO- MIESZKANIE nr 10 - 35,39m²