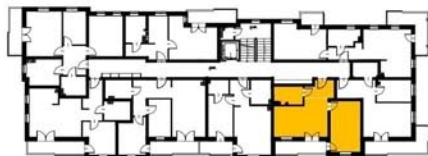
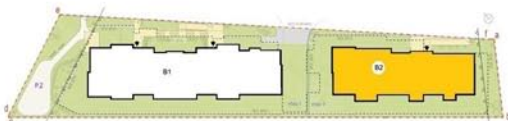


TRANSMIK

www.transmik.pl

MLAWA, UL. SMOLARNIA



POWIERZCHNIA UŻYTKOWA 43,88 m²

- | | | |
|----------------------------|---|---------------------|
| 1. HOL | - | 4,74m ² |
| 2. POKÓJ DZIENNY Z ANEKSEM | - | 18,61m ² |
| 3. SYPIALNIA | - | 15,46m ² |
| 4. ŁAZIENKA | - | 5,07m ² |
| 5. BALKON | - | 6,56m ² |

