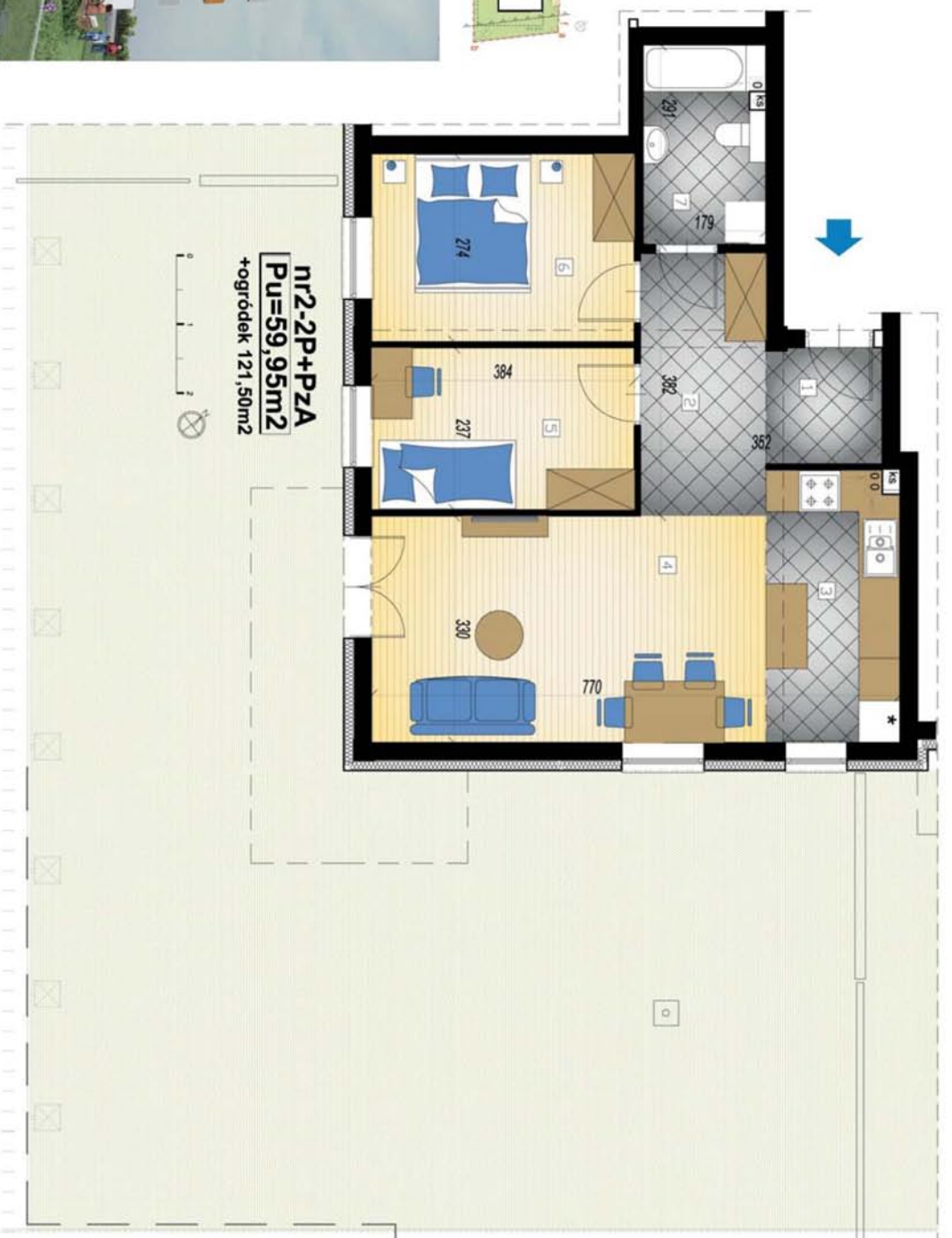
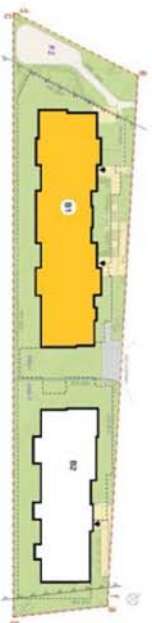


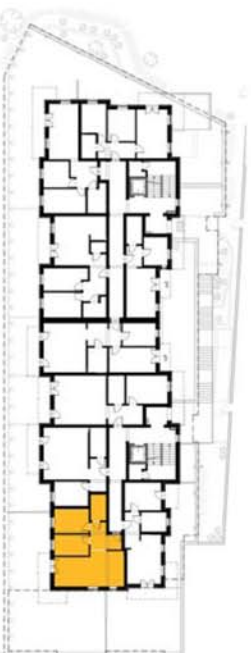
POWIERZCHNIA UŻYTKOWA

59,95 m<sup>2</sup>

- 1 i 2 HOL - 8,26 m<sup>2</sup>
- 3 i 4. POKÓJ DZIENNY Z ANEKSEM - 27,52 m<sup>2</sup>
- 5. ŁAZIENKA - 4,97 m<sup>2</sup>
- 6. SYPIALNIA - 10,31 m<sup>2</sup>
- 7. SYPIALNIA - 8,89 m<sup>2</sup>



nr2-2P+PZA  
Pu=59,95m<sup>2</sup>  
+ogródek 121,50m<sup>2</sup>



„ZIELONE OGRODY”

**TRANSMIK**

www.transmik.pl

KLATKA 1 - PARTER- MIESZKANIE nr2 - 59,95m<sup>2</sup>